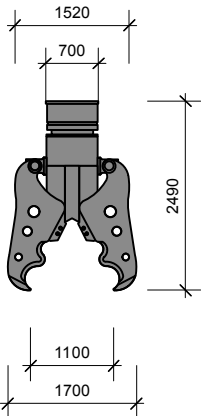


Kocurek Conversion - Boom Configuration

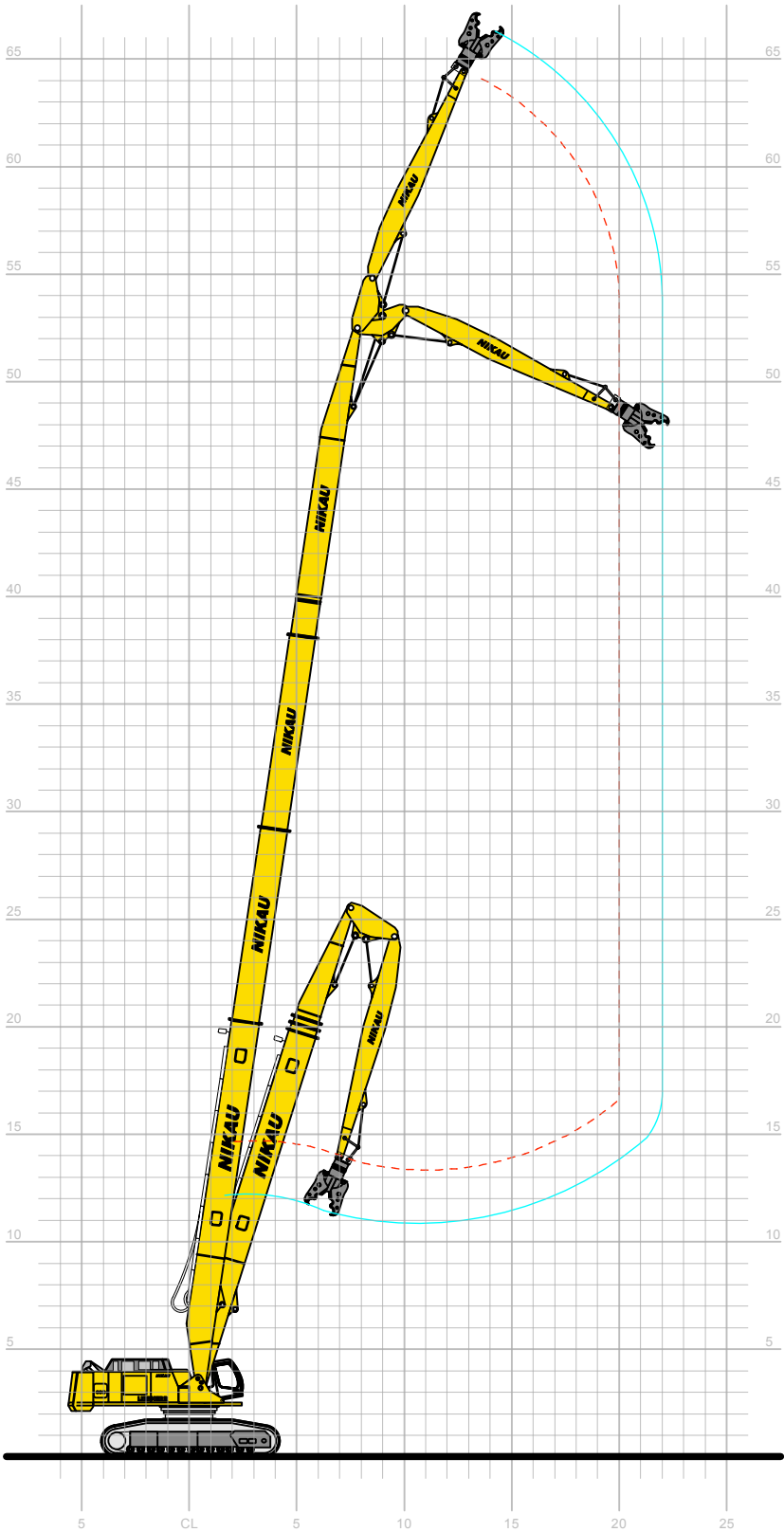
NOTES:

- 1. MAXIMUM ATTACHEMENT SIZE 2.5 TONNE (INCLUDING ATTACHEMENT HEAD AND/OR HITCH)
- 2. ACHIEVE MAXIMUM OUTREACH ONLY WITH BOOM, MID DIPPER AND DIPPER IN CONFIGURATION SHOWN.



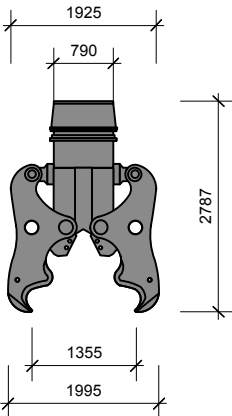
CRUSHER

NPK: S - 24XC(R)



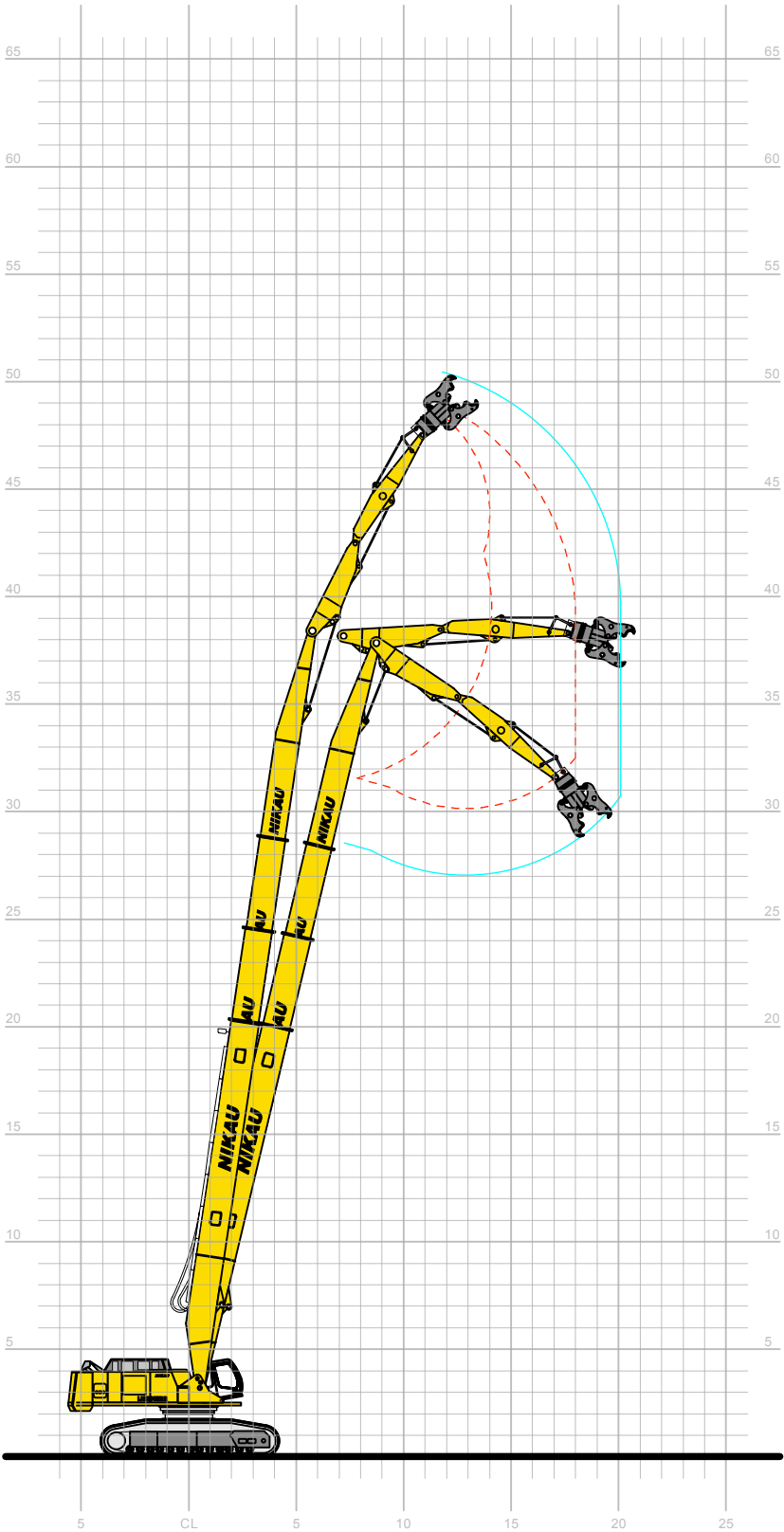
NOTES:

- 1. MAXIMUM ATTACHEMENT SIZE 3.5 TONNE (INCLUDING ATTACHEMENT HEAD AND/OR HITCH)
- 2. ACHIEVE MAXIMUM OUTREACH ONLY WITH BOOM, MID DIPPER AND DIPPER IN CONFIGURATION SHOWN.



CRUSHER

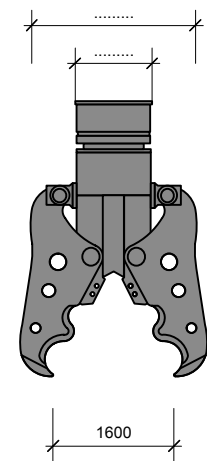
NPK: S - 36XC(R)



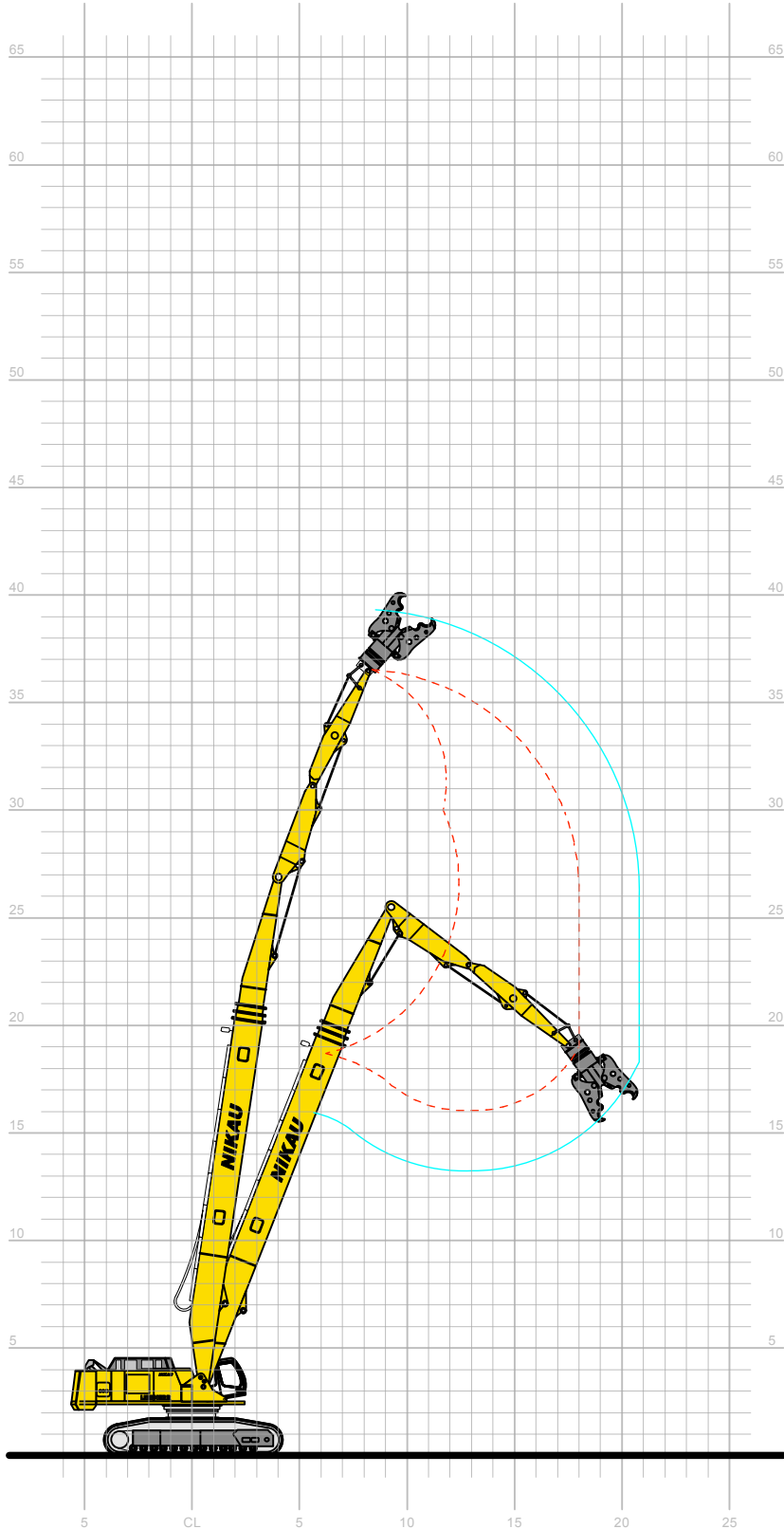
Kocurek Conversion - Boom Configuration

NOTES:

- 1. MAXIMUM ATTACHEMENT SIZE 6.0 TONNE (INCLUDING ATTACHEMENT HEAD AND/OR HITCH)
- 2. ACHIEVE MAXIMUM OUTREACH ONLY WITH BOOM, MID DIPPER AND DIPPER IN CONFIGURATION SHOWN.

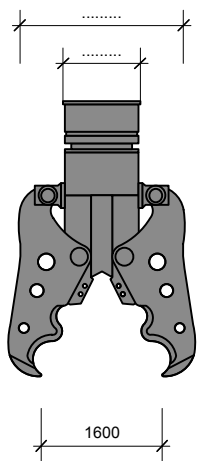


CRUSHER
NPK: S - 60XCR

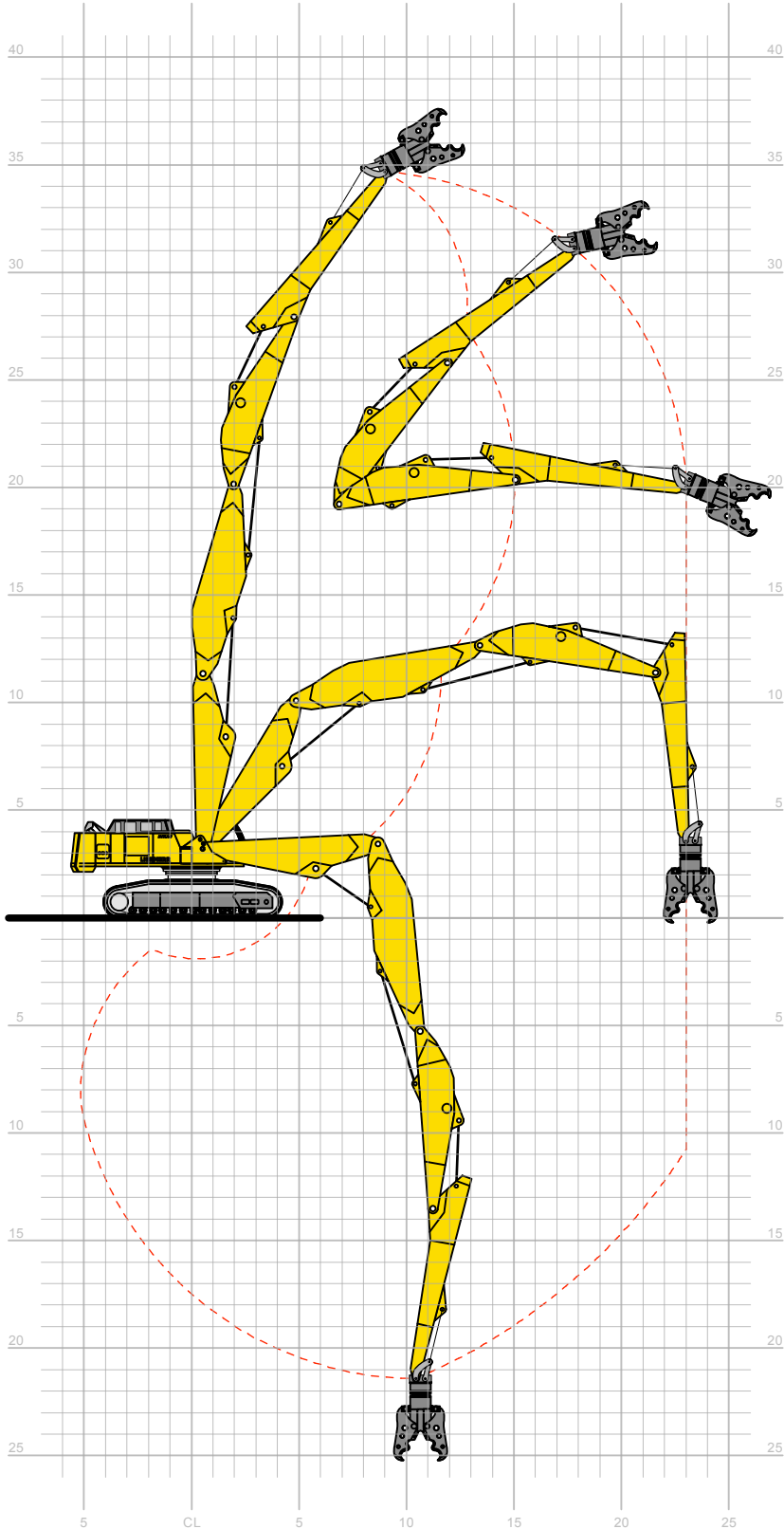


NOTES:

- 1. MAXIMUM ATTACHEMENT SIZE 6.0 TONNE (INCLUDING ATTACHEMENT HEAD AND/OR HITCH)
- 2. ACHIEVE MAXIMUM OUTREACH ONLY WITH BOOM, MID DIPPER AND DIPPER IN CONFIGURATION SHOWN.



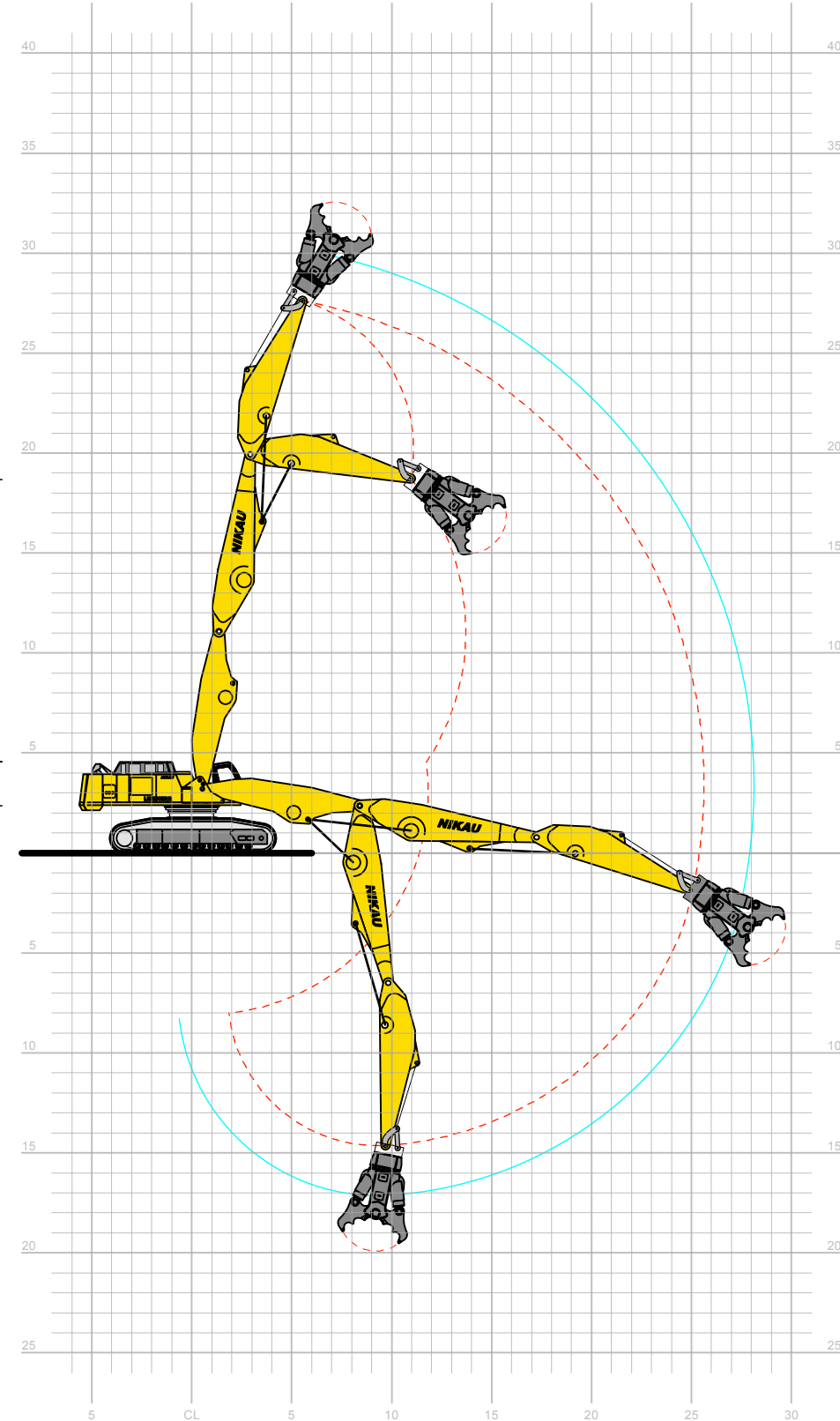
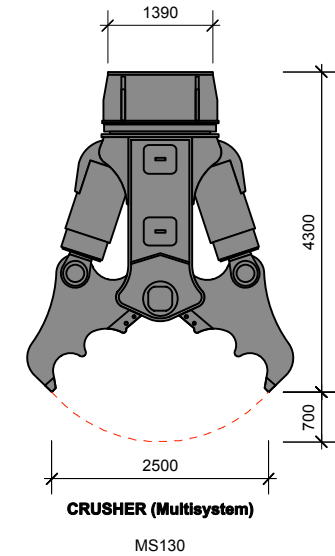
CRUSHER
NPK: S - 60XCR



Kocurek Conversion - Boom Configuration

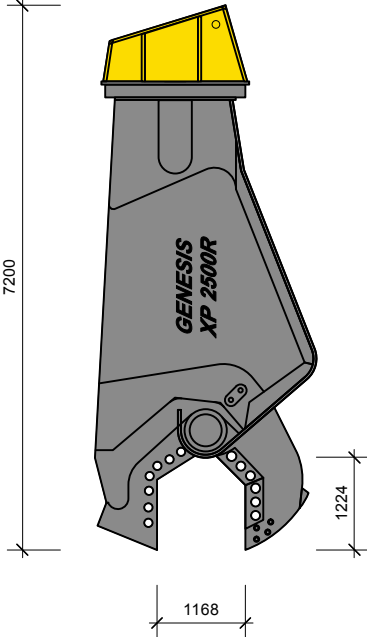
NOTES:

- 1. MAXIMUM ATTACHEMENT SIZE 14 TONNE (INCLUDING ATTACHEMENT HEAD AND/OR HITCH)
- 2. ACHIEVE MAXIMUM OUTREACH ONLY WITH BOOM, MID DIPPER AND DIPPER IN CONFIGURATION SHOWN.

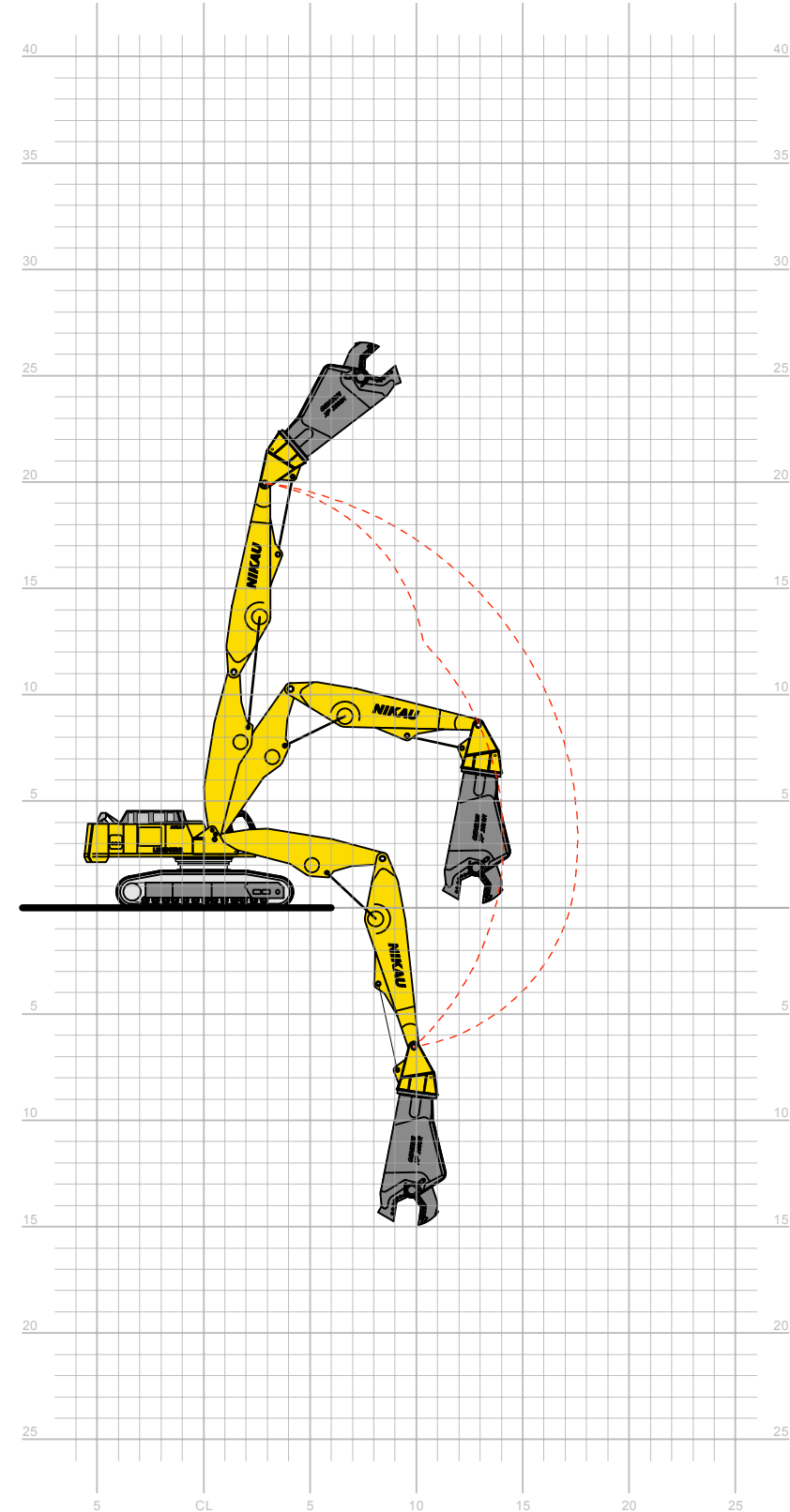


NOTES:

- 1. MAXIMUM ATTACHEMENT SIZE 25.0 TONNE (INCLUDING ATTACHEMENT HEAD AND/OR HITCH)
- 2. ACHIEVE MAXIMUM OUTREACH ONLY WITH BOOM, MID DIPPER AND DIPPER IN CONFIGURATION SHOWN.



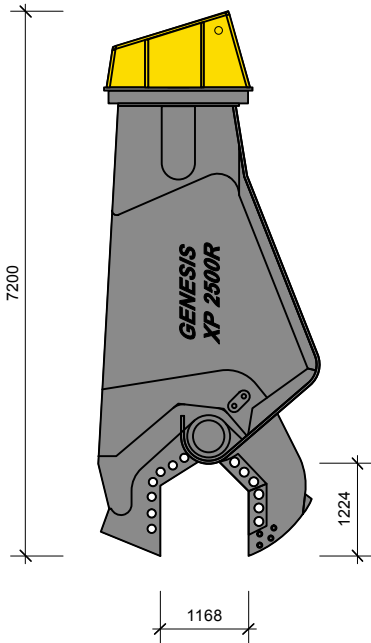
SHEARS
Genesis: GXP 2500R



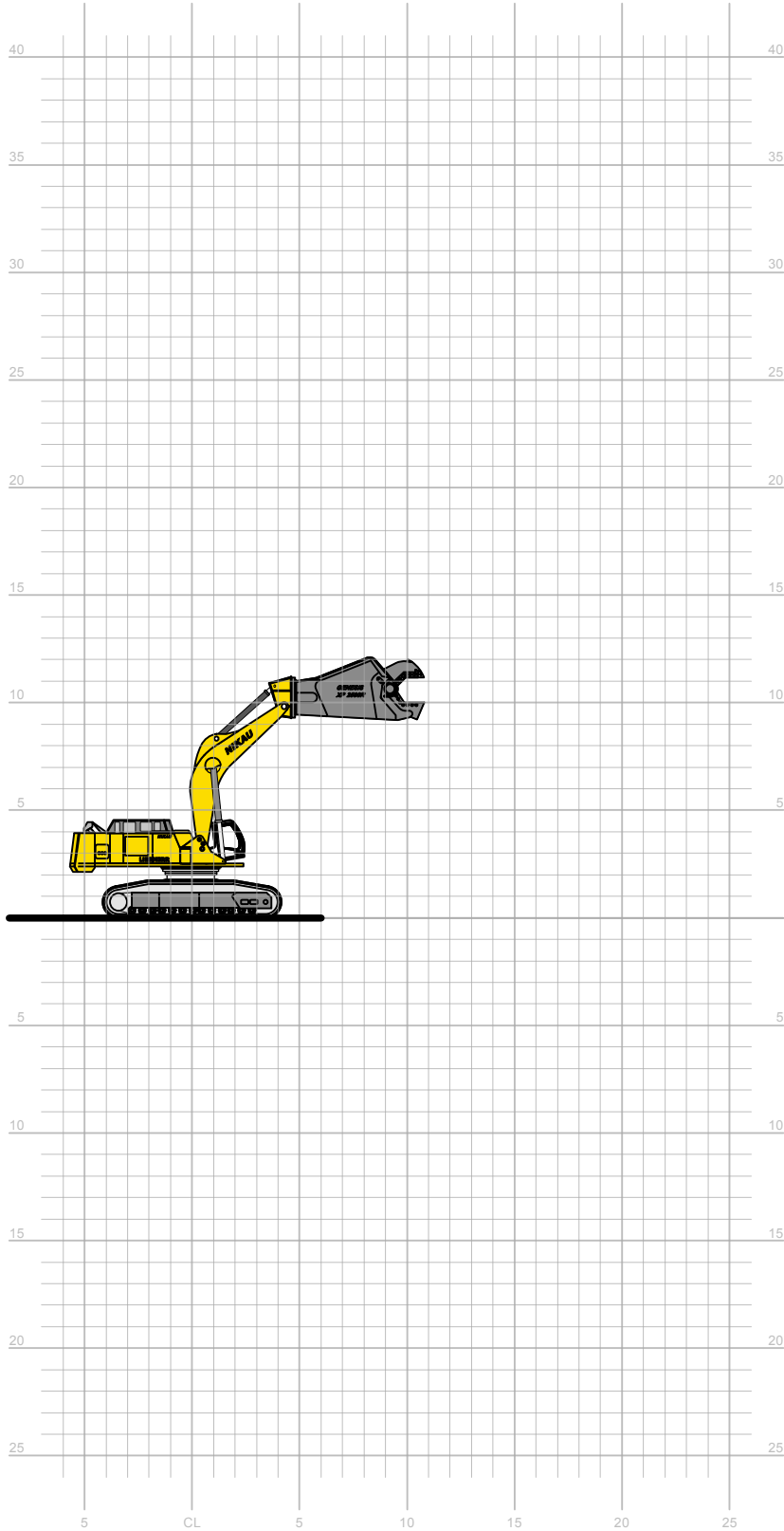
Kocurek Conversion - Boom Configuration

NOTES:

- 1. MAXIMUM ATTACHEMENT SIZE 25.0 TONNE (INCLUDING ATTACHEMENT HEAD AND/OR HITCH)
- 2. ACHIEVE MAXIMUM OUTREACH ONLY WITH BOOM, MID DIPPER AND DIPPER IN CONFIGURATION SHOWN.

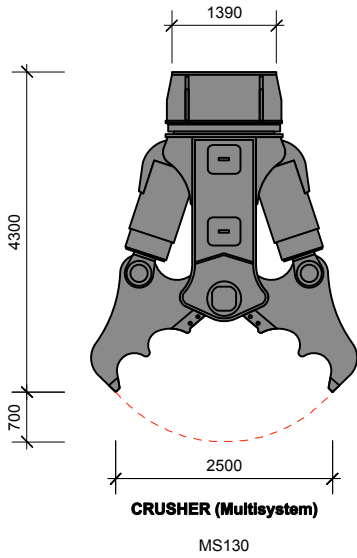


SHEARS
Genesis: GXP 2500R

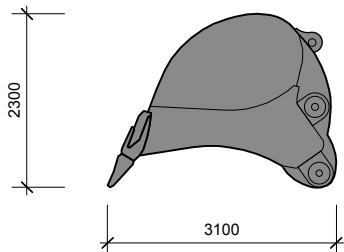


NOTES:

- 1. MAXIMUM ATTACHEMENT SIZE 14 TONNE (INCLUDING ATTACHEMENT HEAD AND/OR HITCH)
- 2. ACHIEVE MAXIMUM OUTREACH ONLY WITH BOOM, MID DIPPER AND DIPPER IN CONFIGURATION SHOWN.



CRUSHER (Multisystem)
MS130



BACKHOE BUCKET (HD)

