

NikauGroup

STRATEGIC DECONSTRUCTION & ENVIRONMENTAL

CAPABILITY STATEMENT 2020-2021





CONTENTS

COMPANY OVERVIEW

4	Demolition Services profile
6	Our People and Resources
9	HSEQ Overview
11	Accreditations
12	Projects



“Nikau Contractors has been a pioneer in much of the advancement made in New Zealand over the past 40 years”



DEMOLITION SERVICES PROFILE

With a history extending for over 40 years, Demolition Services has established a New Zealand - wide reputation for delivering the highest standards of demolition, deconstruction and environmental services.



Nikau Contractors Ltd (NCL) has the skills to quickly identify the critical, key elements of a project scope – particularly within challenging work environments. Our project delivery teams have both the experience and expertise to develop project specific solutions for the most complex of demolition challenges.

“Nikau Contractors Ltd has been a Pioneer in much of the advancement made by the demolition industry in New Zealand over the past 40 years.”

Competitive Advantages

Nikau Contractors Ltd has extensive points of difference when it comes to demolition projects — the most important being our focus on a positive safety culture, followed by our experience work within live and facilities, including oil refineries, power stations, chemical manufacturing plants, hospitals and airports.

Activities within these environment demands an almost surgical approach to the tasks of demolition, dismantling and decommissioning.

The safe systems of work developed by Nikau Contractors Ltd provide a systematic, detailed and controlled approach for every activity. Our expertise gives clients confidence that projects will be delivered safely, successfully, and within the agreed time and budgetary constraints.

- Safety is integrated into every aspect of our business. NCL's OHS management system is certified to AS/NZS 4801-2001
- NCL has built a team of professionals who can deliver project excellence in an increasingly demanding and exacting marketplace
- We pride ourselves on gaining an understanding of the needs of our clients, having worked with many of New Zealand's largest corporations, government bodies, developers and private businesses.



NCL continually invests in new technologies and equipment that enhances both the safety and efficiency of our demolition projects.

- NCL aim to recycle 100% of all waste streams. We currently achieve >98% on the majority of our projects
- NCL aim to recycle 100% of all waste streams. We currently achieve >98% on the majority of our projects.

Safety First

Safety is integrated into every aspect of our business. It is at the forefront of every task we undertake. The company has developed systems of safe work which can integrate into the client's existing safety management system, allowing the high-risk activities associated with demolition to be completed in a safe and controlled manner. Our occupational health & safety management system has received accreditation against AS/NZS 4801:2001 and forms part of our overall integrated management system. We are proud to have been at the forefront of many of the safety procedures that are viewed as standards within the demolition industry today and we continue to set the benchmark for safety and service in the demolition industry.

First-Class Team

Nikau Contractors Ltd invests heavily in training, personal development and education because we recognise people are our strength. Guided by the company's principles of safety, collaboration, innovation, integrity, leadership and reliability, the NCL team is committed to delivering exceptional project outcomes for all of our clients

Our Clients

Nikau Contractors Ltd works with a broad range of clients, including multinational corporations, government bodies, developers and private businesses. Much of the experience within our project management team has been gained working with a range of domestic and international companies,

including Contact Energy, Caltex, BP, Shell, Sherwin Williams, Ford, Wesfarmers, Marsden Point Oil Refinery, Auckland Airport, ExxonMobil, Holcim, Dow Chemicals, and Port Taranaki.

By combining our commitment to training with our experience, NCL consistently strives to deliver high quality project outcomes.

“We believe that our understanding of a client’s drivers is what separates us from our competition.”

John Stil

Managing Director, Nikau Contractors Ltd

Sustainability

NCL is committed to achieving environmentally sustainable outcomes for all projects. We continually search for new ways to improve our environmental performance, working closely with our clients to identify appropriate and innovative waste reduction strategies.

With a commitment to reuse and recycle, NCL maximizes each opportunity to deliver flexibility around either onsite re-use or offsite disposal of recyclable materials, such as concrete, asphalt, and bricks.

Innovation

We are constantly looking for ways to improve our operations through investment in new technologies.

In situations where safe access to an area cannot be guaranteed, NCL has used a number of remote- control options. These areas include burnt out, ruinous or unstable structures, where activities have included the placement of explosives and the scanning of unstable areas.

NCL has embraced advances in computer software. Our in-house engineering teams utilise CAD and scanning & 3D modelling software for the development of work methodology statements and project design.



OUR PEOPLE & RESOURCES

We believe that through careful planning all incidents are preventable and that highly trained, experienced people equipped with the appropriate equipment will lead to the successful execution of complex demolition activities.



OUR PEOPLE

At Nikau Contractors Ltd, our people are at the core of our business and our success. With the contributions, passion, and vision of our highly trained workforce, we continue to build our future and to be highly competitive in the demolition industry.

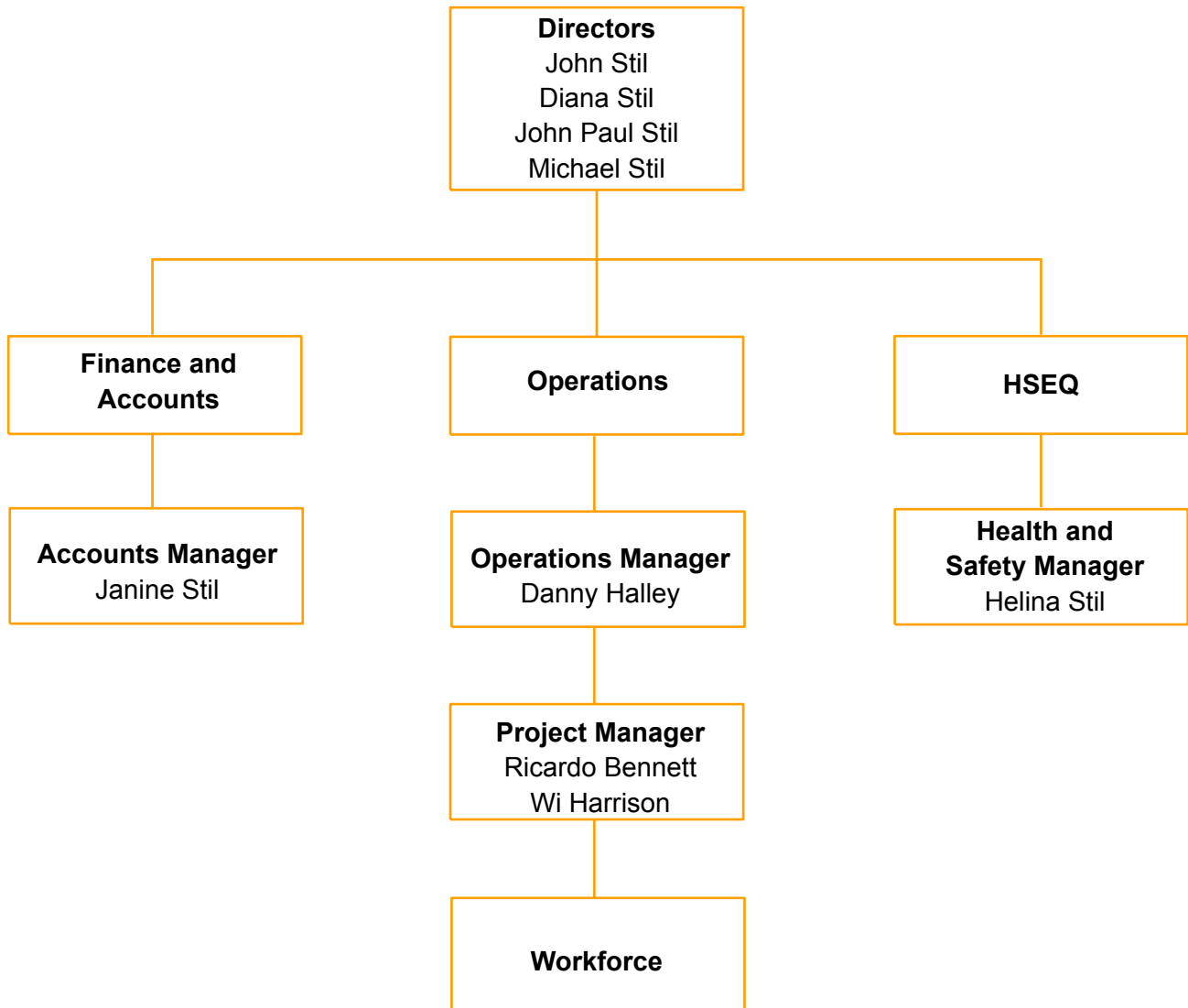
Highly experienced, passionate, professional and customer-focused are characteristics that define our team.

Nikau Contractors Ltd employs a large pool of highly qualified and talented people, including some of New Zealand's most experienced Project Directors, Operations Managers, Project Managers, Engineers, Demolition Supervisors, Plant Operators and Demolition Trades. Guided by the company's principles of collaboration, safety, innovation, integrity, leadership and reliability, Nikau Contractors Ltd demolition team is committed to delivering exceptional project outcomes for our clients.



MEET THE MANAGEMENT TEAM

Many of our senior team members have more than 25 years of industry-experience and have an impressive track record in providing innovative and customised demolition solutions. The management team at Nikau Contractors Ltd are widely recognised as some of the most experienced experts in the removal of full scale redundant assets, and have been credited for developing many of the standards and procedures that have established the benchmarks in the demolition industry.

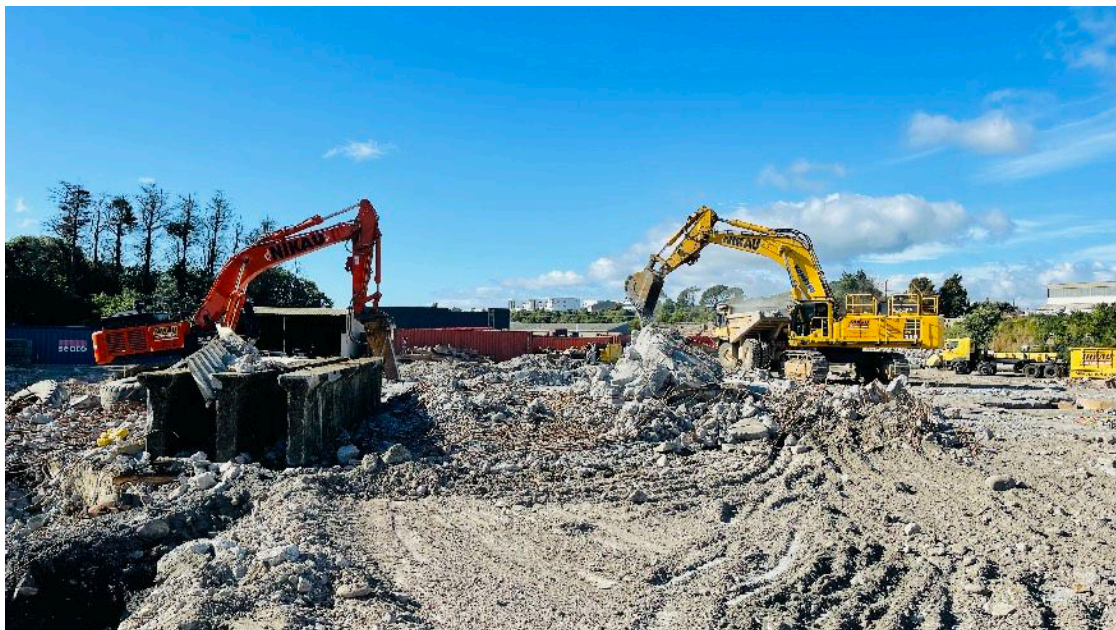




PLANT AND EQUIPMENT

With an extensive fleet of plant and equipment, along with access to specialist professional services, Nikau Contractors Ltd is able to offer safe, site specific demolition solutions within its broad range of services.

By owning and operating a large range of late model and modern equipment, including excavators of all sizes with various specialised attachments, skid steer loaders, boom lifts, telehandlers, and marine equipment, asbestos removal equipment, saw cutting equipment and various sized cranes ranging from 90t to 300t, NCL is able to mobilise swiftly to solve unforeseen challenges during demolition and environmental projects, and respond to requests from emergency services in scenarios such as industrial fires, train derailments, and structural failures and natural disasters.





HSEQ OVERVIEW

Nikau Contractors Ltd (NCL) operates on the basis of a fully integrated management system which combines the elements of Health, Safety, the Environment & Quality. Our system is certified against AS 4801-2001, AS/NZS ISO 9001, and AS/NZS ISO 14001.

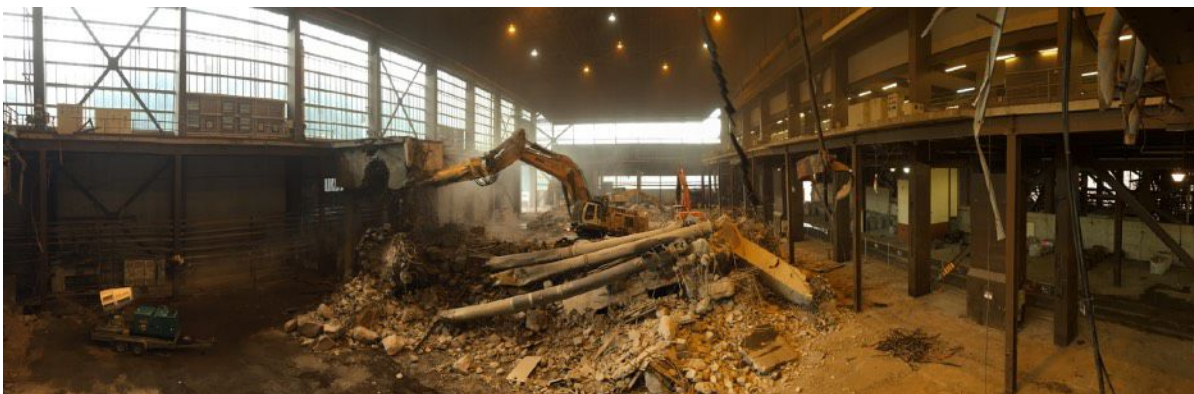


Health & Safety

Safety is what defines us and sets us apart. Nothing is more important than the health and safety of our employees and that of all stakeholders that are involved in our demolition projects. Our AS 4801 certified Occupational Health & Safety management system has specifically been developed to suit demolition activities and meet legislative and client requirements and is based on decades of industry experience.

Our Commitment to Safety on all of our Demolition Sites:

- Eliminate all lost time injuries;
- Eliminate medical treatment injuries;
- Eliminate release of asbestos fibres;
- Positive reporting and investigation of first aid and near miss events;
- Toolbox meetings to be held weekly;
- Pre-start meetings to be held at the start of each shift by each work crew and supervisor Workforce is highly trained and competent for their duties
- Effective minimization of safety hazards
- Subcontractor's prequalification assessment and pre-start readiness approved
- Compliance with project specific H&S Management Plan/SWMs





Environment

Our AS/NZS ISO 14001 certified Environmental Management System has been designed to not only ensure compliance with regulatory and client requirements, but to facilitate a pro-active consideration of issues, embedding them into ongoing site operations. If we can develop a way to do a task with an enhanced regard for environmental standards and outcomes, we adopt it.

Our Environmental Commitment on all of our Demolition Sites:

- Eliminate all notifiable environmental incidents;
- Positive reporting and investigation incidents;
- Toolbox meetings to be held weekly;
- Pre-start meetings to be held at the start of each shift;
- Workforce is highly trained and competent for their duties;
- Minimise environmental hazards and inspection programs operating effectively;
- Subcontractor's pre-qualification assessment and pre-start readiness approved;
- Compliance with project specific Environmental Management Plan/SWMs.

Quality

The quality system is a component of the company's overall management system and is AS/NZS ISO 9001 certified. It includes all elements of the groups' operations from Senior Management level to the daily basics of site operations.

All personnel are trained in operational aspects of the Quality component of the management system, as part of their induction and continuing training. The corrective action reporting system allows employees to raise Corrective Action Requests to provide suggested changes to management. Through consultation and communication, suggestions from employees for improvement in process and methodology, are reviewed and if found to improve operations, implemented.



ACCREDITATIONS

ISNetworld

Nikau Contractors Ltd is registered with the ISNetworld platform. ISN provides an online contractor management database, ISNetworld, which is designed to meet internal and governmental record keeping and compliance requirements. ISN collects health and safety, procurement, quality and regulatory information.



Impac Prequal

Nikau Contractors Ltd is registered with Impact Prequal similar to that of ISN. NCL has a 5 Star assessment rating as of Dec 2020 and expires in Dec 2022.



Green Star

Nikau Contractors Ltd is is certified with Green Star to received demolition concrete waste and turn this into a recyclable product. This helps reduce not just your carbon footprint but save you money, create a healthy productive place for people, and build a better future for us all.



SiteWise

Site Safe Sitewise is an easy and widely accepted way to signal to your existing and potential clients that your business' Health and Safety is excellent. It's an online assessment where your uploaded documentation is assessed and given a score of 1-100%. To achieve the minimum standard, Sitewise Green, you need a score of 75% or above Nikau Contractors Ltd has achieved 100% Site Wise Gold





MAJOR DEMOLITION SERVICES PROJECTS 2020-2021

2021

- Ravensdown Demolition and Environmental Remediation - New Plymouth
- Auckland University B201 - Auckland
- Unitec B108 - Auckland
- Unitec B111-115 - Auckland
- Shed 6 Deconstruction and asbestos Removal - New Plymouth
- 60 Roma Road Demolition and Asbestos Removal - Auckland
- Papakura Army Camp Environmental Remediation - Auckland
- Fonterra Te Rapa Chimney Deconstruction - Hamilton
- Fonterra Heat Recovery Boiler Deconstruction - Te Awamutu
- Sherwin Williams Paints Demolition - Auckland
- Dow Chemicals Demolition - Auckland
- Glenbrook Steel Demolition - Auckland

2020

- Gisborne Hospital - Gisborne
- Auckland Airport Hanger Ventilation Deconstruction - Auckland
- Fonterra Boiler Deconstruction - Hamilton
- Northern Expressway Demolition and Crane Works - Auckland
- Northern Corridor Bridge Deconstruction - Auckland
- Auckland Airport Gantry Sign Deconstruction - Auckland
- Z Station Airport Demolition and Environmental Remediation - Auckland
- Mckechnies Demolition and Asbestos Removal - New Plymouth
- Golden Bay Cement Silo Deconstruction Port Taranaki - New Plymouth
- Auckland Library Deconstruction - Auckland
- Holcim Cement Demolition - Westport

Capability - Projects

Project 1: Defence House Wellington

Client: Fletcher Construction Ltd

Contact: Bob Hall

email - bob.hall@rija.co.nz

Mob- 021 412240

Project Date: July 2017- March 2018



- Utility disconnection / isolation
- Retrieval client assets / salvage
- Internal strip out multi-storey commercial
- Deconstruction – Cut and Crane
- Demolition - High Reach
- Demolition heavy machinery
- Site clearance
- Mass recycling concrete for reuse
- Video Link - <https://vimeo.com/277739376>

Project Overview:

Defence House (also known as Freyburg House), the headquarters of the New Zealand Defence Force and Ministry of Defence, sustained structurally critical damage during the November 2017 Wellington earthquakes making the nine storey building (plus basement) uneconomical for repair.

Located in the heart of Wellington City and a stone's throw from the country's political and public services precincts (the National Archives and Beehive located just across the road), while temporary engineering meant the building was not an immediate health and safety risk to the public, the proposed deconstruction required a controlled, low risk method with minimal impact on the environment and people.

The building was constructed to literally withstand a bomb blast, with 1.2m thick columns, reinforced gates and impact shields, bullet proof glass and a secret command centre on the highest level accessible only by a secret elevator shaft, it's presence not recorded on any of the building's structural drawings and a surprise to contractors when discovered.

The basement had large diesel fuel and water tanks and self-reliant generators, enough to provide its inhabitants for whatever contingency. The plant room on the roof housed 9 hospital grade air handling units and 8 large capacity water boiling units. All plant and equipment had only been installed months before the earthquake, some equipment have little as 45hrs on its meters.

Nikau was tasked with and successfully completed:

- Developing a unique method of deconstruction, accounting for the already compromised state of the building that acknowledged the sensitive nature of the project and effect on members of the public, surrounding businesses and apartment owners – the method employed used a combination of core drilling, cut and crane, ultra-high reach, high reach and heavy equipment deconstruction.
- Council restrictions and traffic management dictated a compressed program for completion.

Capability - Projects

Project 2: New Plymouth Power Station

Client: Port Taranaki/Worley Parsons

Contact: Peter Boyce

[email - Peter.Boyce@WorleyParsons.com](mailto:Peter.Boyce@WorleyParsons.com)

Mob- 027 279 1004

Project Date: 2014-2016



Contractor responsibilities:

- Deconstruction of New Zealand 2nd largest coal fired Power-station.
- Removal of Asbestos materials throughout
- Cut and Crane of large structural elements some at 90t sections
- Crushing and recycling of more than 20,000m3 of concrete material for backfilling.
- Demolition high reach
- Demolition heavy machinery
- Working around live assets including live heavy transformers owned by Transpower.
- Make good the turbine hall slab with the design in install of a 200mm thick fibre slab of around 10,000m2.

Project Overview:

Port Taranaki Limited engaged Worley Parsons (WP) to manage and tender out the deconstruction project. WP sorted interest from demolition and scrap companies from Australia and New Zealand.

Nikau's bid was more relying on the fact that demolition was the key driver in making the project successful not the scrap,. and that the scrap is a by-product of the demolition and getting the structures down safely was more important. Nikau also highlighted its experience in demolishing top hung boilers through the Meremere Deconstruction Project.

The Port Taranaki Power Station (NPPS) is the most complex demolition project undertaken in New Zealand to date with the highest recovery of scrap metal.

Key considerations impacting on the design of the deconstruction methodology are as follows:

- The PTPS has 5 top hung boilers enclosed in the Boiler House approximately 50m in height.
- Dismantling of the 5 turbines with maximum lifts of 60 tonnes.
- On the boundary of a nationally recognised marine reserve to the north which houses a seal colony and fauna and flora which had an impact on the type of deconstruction activities employed along with environmental controls throughout the project.
- No implosion was allowed due to fuel tanks adjacent to the site, the Turbine Hall and the 198m chimney are to remain.
- Removal and processing of all ferrous and non-ferrous metals for resale to overseas buyers 23,000 tonne. Recycling of 20,000m3 of concrete for backfilling of the site.

Please see the link below for our video of this project

<https://vimeo.com/135509448>

Capability - Projects

Project 3- Holcim Cement Plant Westport

Client: Holcim (NZ)

Contact: Larry Eade
(Holcim Project Manager)

Email: larry.eade@lefargeholcim.com

Mob: 022 0386 120



Project Date: November 2018 - April 2020

Contractor responsibilities:

- Class A (lagging/millboard) and Class B Asbestos Removal (cladding) utilising crane man-cage and (Work Safe NZ approved) controlled collapsing methodologies
- Creating 3 consented internment cells for the safe disposal of asbestos containing materials and approved capping process.
- Demolition by Ultra high reach
- Demolition using heavy machinery
- Recycling of more than 12,000t to date of ferrous metals
- Recycling of more than 500t of non-ferrous metals to date
- Located over multiple sites throughout Westport
- Recycling of over 50,000m³ of concrete for backfilling of voids.
- Environmental removal of dry cement residue from silos 400 tonne
- Site clearance and remediation of multiple sites.

Project Overview:

Holcim Cement Works Westport is the largest single demolition and clearance project undertaken in NZ this far requiring machinery force of 55tonne to 250 tonne capacity.

The original timeframe for this work envisaged by Holcim was 18 months however Nikau is on track to achieve this in 15 months and includes additional civil works requested by Holcim.

The location spanned over several sites in Cape Foulwind and Westport being total area in excess of approximately 200 hectares.

33,000m² as asbestos exterior cladding with added historic clinker cement adherence with an average layer cover of 100mm density.

Demolition of heavy mills, 3 concrete chimneys at 50m in height, 9 concrete silos ranging in height of 35m, 3 on a seaside wharf area in direct border of the township.

Maintaining strict environmental controls with open and close communication between Holcim and Nikau management throughout.

Holcim regard this project Health and Safety statistics at record low nationally and internationally.

Opportunity to train (temporary) local employees in the field of demolition and machinery operations to enhance their own future employment opportunities.

Please see the link below for our video of this project

<https://vimeo.com/439650969>

Capability - Projects

Project 4- McClymonts Bridge Deconstruction

Client: Fulton Hogan Construction

Contact: Ross Clifford
(Project Engineer)

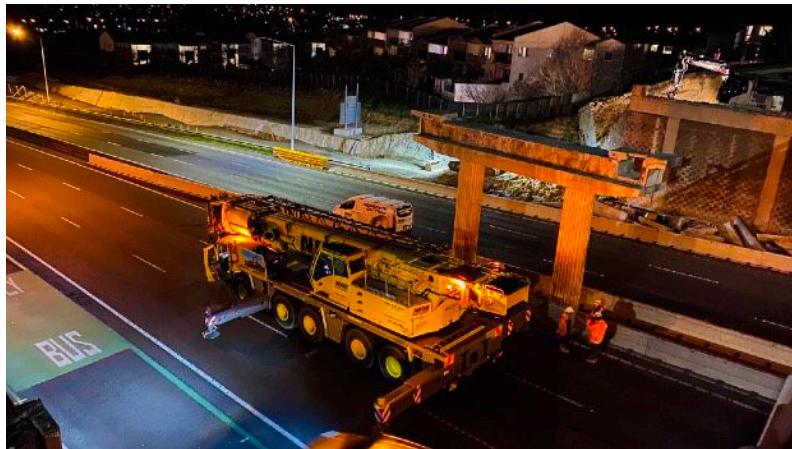
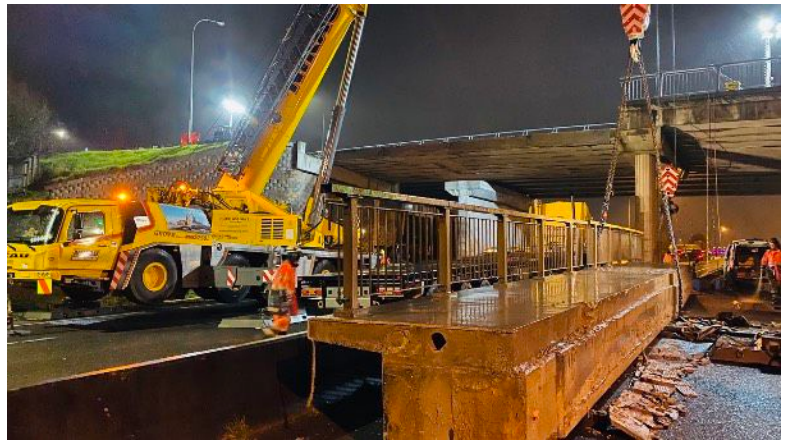
Email: ross.Clifford@fultonhogan.com

Mob: 027 214 8819

Project Date: July 2020 - August 2020

Contractor responsibilities:

- Concrete cutting of bridge deck
- Craning and lifting out concrete dycore beams 22m and weighing 28t
- Wiresawing and craning of headstock and columns
- Unloading at Meremere for recycling
- Recycling of more than 500t of concrete debris
- Demolition of abutments using heavy duty demolition excavators



NikauGroup

STRATEGIC DECONSTRUCTION AND ENVIRONMENTAL



NIKAU CONTRACTORS LTD
355 CHURCH STREET ONEHUNGA AUCKLAND NEW ZEALAND
+649 636 5917
www.nikaugroup.com